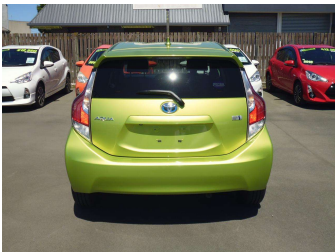


# 2016 Toyota Aqua S Hybrid



### Purchase Price

**\$10,990**

Includes GST, Registration & Licensing

Finance may be available on this vehicle. Ask one of our friendly staff for more information.



Gain peace of mind with Mechanical Breakdown Insurance. **Ask us how.**



### Top features

- » 3point Rear Seatbelts
- » ABS Braking
- » Air Conditioning
- » Central Locking
- » Climate Control A/C
- » Cruise Control
- » Electric Mirrors (Retr...
- » Electric Windows
- » Electronic Stability C...
- » Face Lift Model
- » Folding Rear Seats
- » Front Airbags
- » Fuel Injected
- » Full Service History
- » Power Steering
- » Rear Wiper
- » Remote Locking
- » Reversing Camera

### Body Style

**5 door, Hatchback**

### Odometer

**70,866 km**

### Engine

**1496 cc, Hybrid**

### Fuel Type

**Petrol**

### Transmission

**Automatic, Front Wheel**

### Wheels

**Hubcap**

### VIN

**7AT0H65YX24545323**

### Interior

**Black**

### Safety



Based on 2024 UCSR rating for 12-20 models

### Reg No.

-

### Ext Colour

**Lt Green**

### History

**Ex-Overseas**

### Seats

**5 seats**

### CO2 Emissions

★★★★☆

**92 grams/km**

### Energy Economy

★★★★☆☆

**Annual fuel cost of \$1,530  
3.9L per 100km**

Cost per year is an estimate based on petrol price of \$2.80 per litre and an average distance of 14000 km. Emissions and Energy Economy figures standardised to 3P WLTP.

**Stock ID: 3155**



Metro Christchurch | Phone 03 348 5855 | Email [chrisn@metrochch.co.nz](mailto:chrisn@metrochch.co.nz)  
331 Blenheim Road, Riccarton, Christchurch 8442, New Zealand  
[www.metrochch.co.nz](http://www.metrochch.co.nz)

