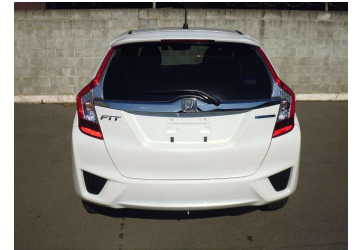
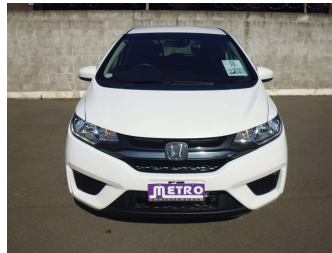



2015 Honda Fit Hybrid F-Pkg



Purchase Price **\$14,990**
Includes GST, Registration & Licensing

Finance may be available on this vehicle. Ask one of our friendly staff for more information.



Gain peace of mind with Mechanical Breakdown Insurance. **Ask us how.**



Top features

- » 3point Rear Seatbelts
- » AA Appraised
- » ABS Braking
- » Air Conditioning
- » Central Locking
- » Certified Odometer
- » Climate Control A/C
- » CVT Automatic Transmis...
- » Electric Windows
- » Electronic Stability C...
- » Folding Rear Seats
- » Front, Side & Curtain...
- » Full Service History
- » Immobiliser
- » Power Steering
- » Rear Wiper
- » SMART Key with Keyless...

Body Style
5 door, Hatchback

Odometer
48,232 km

Engine
1496 cc, Hybrid


Fuel Type
Petrol

Transmission
Automatic, Front Wheel

Wheels
-

VIN
7AT08G2YX24209183

Interior
Black

Safety


Based on 2023 UCSR rating for 14-20 models

Reg No.
-

Ext Colour
White

History
Ex-Overseas

Seats
5 seats

CO2 Emissions
★★★★☆
92 grams/km

Energy Economy
★★★★☆
Annual fuel cost of \$1,530
3.9L per 100km

Cost per year is an estimate based on petrol price of \$2.80 per litre and an average distance of 14000 km. Emissions and Energy Economy figures standardised to 3P WLTP.

Stock ID: 3092



Metro Christchurch | Phone 03 348 5855 | Email chrisn@metrochch.co.nz
331 Blenheim Road, Riccarton, Christchurch 8442, New Zealand
www.metrochch.co.nz

